

Converged Service Control Point

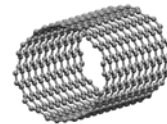
The Converged SCP™ platform is a Service Control Point and a Signal Transfer Point, which supports both TCAP and SIP messaging in a common platform. The Converged SCP™ conforms to:

- ◆ GR-1299-CORE, AIN 0.2 Switch-SCP/Adjunct Interface Generic Requirements
- ◆ GR-246-CORE, Specification of Signaling System Number 7
- ◆ RFC3261, SIP: Session Initiation Protocol

Converged SCP™ platforms have been interconnected to Nortel DMS-250 and DMS-500 switches, Alcatel DEX-600E switches, Lucent 5ESS switches, Siemens EWSD switches, Metaswitch switches, GenBand T9000 switches, Veraz switches and a variety of session border controllers. In addition to standard STP functionality, the Converged SCP™ has been used to convert between ITU-C7 and ANSI SS7 packet protocols.

TCAP services to perform the following have been deployed:

- 10-digit Network Wide Routing
- Jurisdictional Screening
- Single POI for Wholesale Carrier Services
- DID Services Supporting Local Termination
- Conversational Transaction Support with ISUP Data Bag
- Local Call Area Determination and Routing
- CLI Substitution
- ANI Substitution
- DDD Routing & Translation
- IDDD Routing & Translation
- 800 Translation
- LNP Translation
- Calling Card Validation
- Telemarketing Screening
- Message Waiting Indicators
- Inmate Services



Mangold Technologies Corporation
28255 Steeplechase Lane
Fair Oaks Ranch, TX 78015
(210) 380-0458
www.mangoldtechnologies.com



SIP services to perform the following have been deployed:

- Local Service
- Privacy Manager
- Voice Mail
- Distributed Routing
- Call Director

The Converged SCP™ platform is composed of three mandatory server types and four optional feature server types:

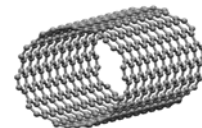
- A mated pair of Database Servers to house applications and database records.
- A mated pair of Signaling Controllers supporting up to 32 links pairs (channelized or as a pair of HSL DS1 links) and floating IPinterface for SIP messaging over 1000/100/10 NIC interfaces.
- Two or more Application Handlers to provide application level handling of TCAP and SIP messaging.

Optionally, a Converged SCP™ platform may deploy:

- A pair of CCServers used to bridge the call data across TCAP and ISUP processing on the same call, or to bridge the call data across multiple TCAP or SIP queries within the same call.
- A pair of WEB servers for interactive record level query and provisioning.
- A pair of Stats Servers used to store all queries and responses handled on the platform and as a debugging and diagnostic tool.
- Two or more Media Gateway servers to provide IVR services on either TDM or IP or both.

The Converged SCP™ platform's capacity is a function of the number of database dips per query, whether TCAP or SIP queries must be launched within a query, offered load and busy hour call distribution. Current Converged SCP™ platforms are handling millions of transactions per day. Converged SCP™ platform prices are a fraction of the monolithic switch vendors' prices for comparable features and functions.

Call or contact us today.



Mangold Technologies Corporation
28255 Steeplechase Lane
Fair Oaks Ranch, TX 78015
(210) 380-0458
www.mangoldtechnologies.com